

The Historic Harm, Inequities & Water Affordability: Race, Rates & Infrastructure

Peter J. Hammer
Professor of Law and Director
Damon J Keith Center for Civil Rights
Wayne State University Law School
All About Water: Equity and Affordability
June 24, 2020

Law v. Equity

- **Definition of *equity***
- **1a:** justice according to natural law
- **3c:** a body of legal doctrines and rules developed to enlarge, supplement, or override a narrow rigid system of law

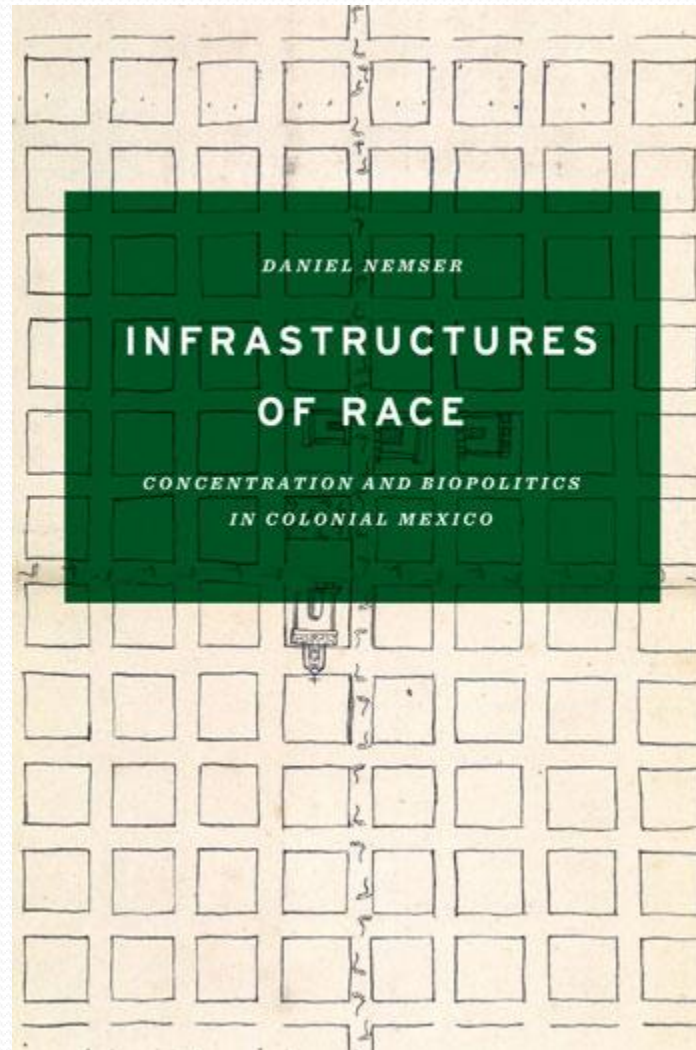
Copyrighted
Material
VIEW ONLY

Words that start with “R”

- **Restitution:** an equitable remedy with two elements
 - A benefit has been conferred
 - It would be unjust to retain it
- **Reparations:**
 - **1a:** a repairing or keeping in repair
 - **2a:** the act of making amends, offering expiation, or giving satisfaction for a wrong or injury

Copyrighted
Material
VIEW ONLY

Race, rates and Infrastructure

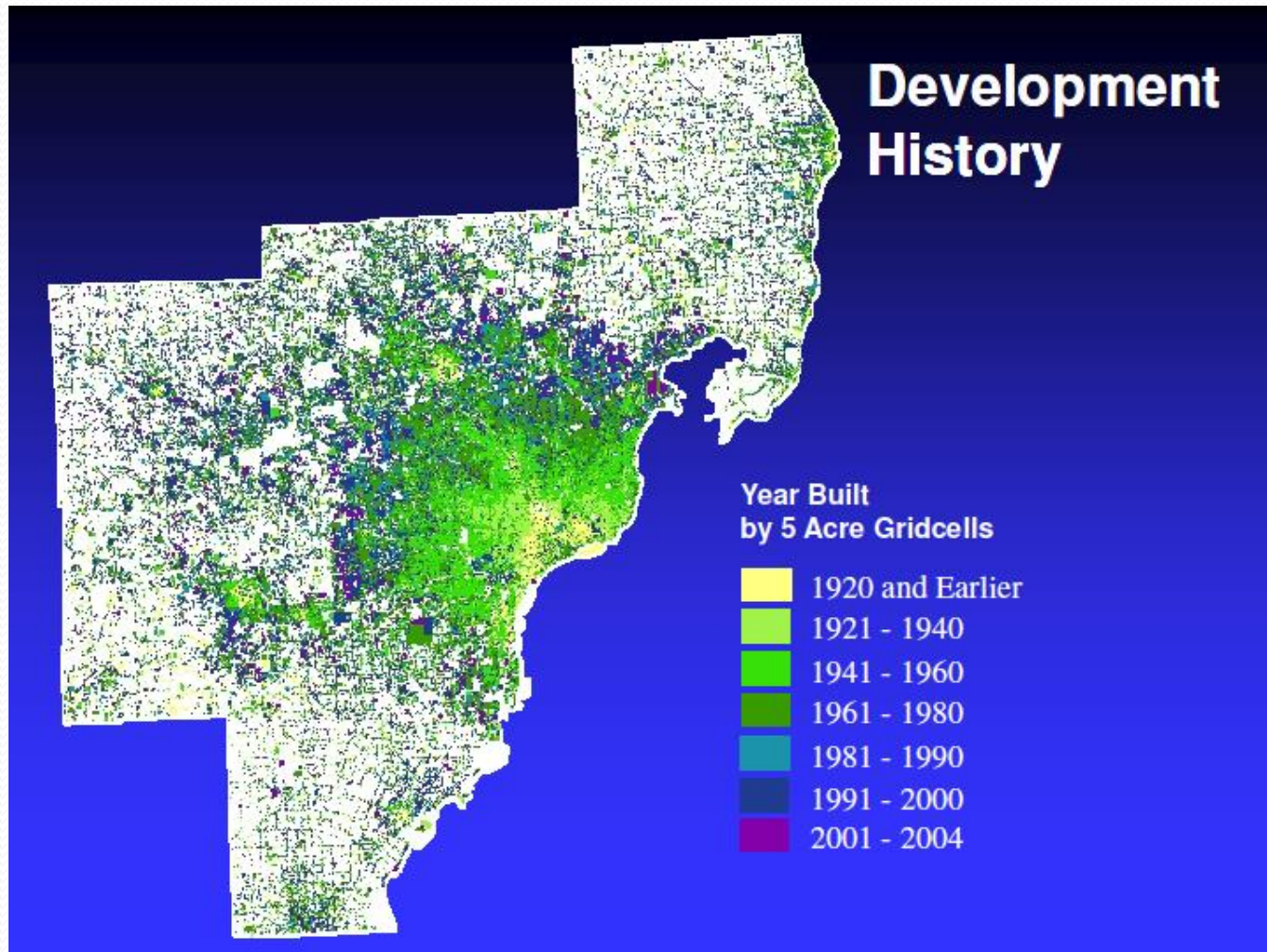


Copyrighted
Material
ONLY

Race, Rates & Infrastructure

- Structural Racism: The inter-institutional dynamics that produce and reproduce racially disparate outcomes over time
- Structural racism requires a bureaucracy, administration and infrastructure to operate
- Water infrastructure can be used as a metaphor to understand the dynamics of structural racism in a region over time
- Rate structures: Oppression manifested through the bureaucratic administration of a public asset

Regionalism: Growth 1920-2004



Added to DWSD, 1950–1959

Berkley

Sterling Heights

Westland

Birmingham

Clawson

Hazel Park

Madison Heights

Beverly Hills

Canton

Centerline

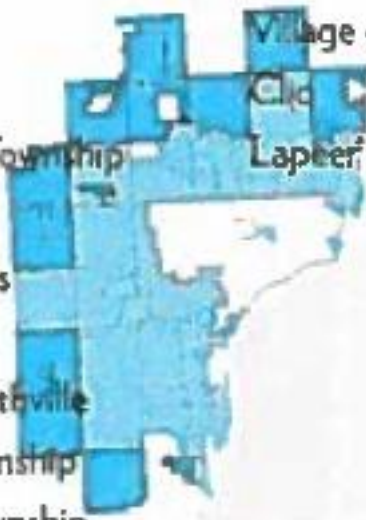
Huron Township



written
al
ONLY

Added to DWSD, 1960–1969

Farmington	City of Flint
Plymouth Township	City of Flushing
Fraser	Keego Harbor
Pontiac	Sumpter Township
Utica	Rockwood
Van Buren Township	Ash Township
Belleville	Village of Carleton
Bloomfield	City of
Northville Township	Lapeer
Troy	
Auburn Hills	
Novi	
City of Northville	
Shelby Township	
Clinton Township	



Written
al
ONLY

Added to DWSD, 1970–1979

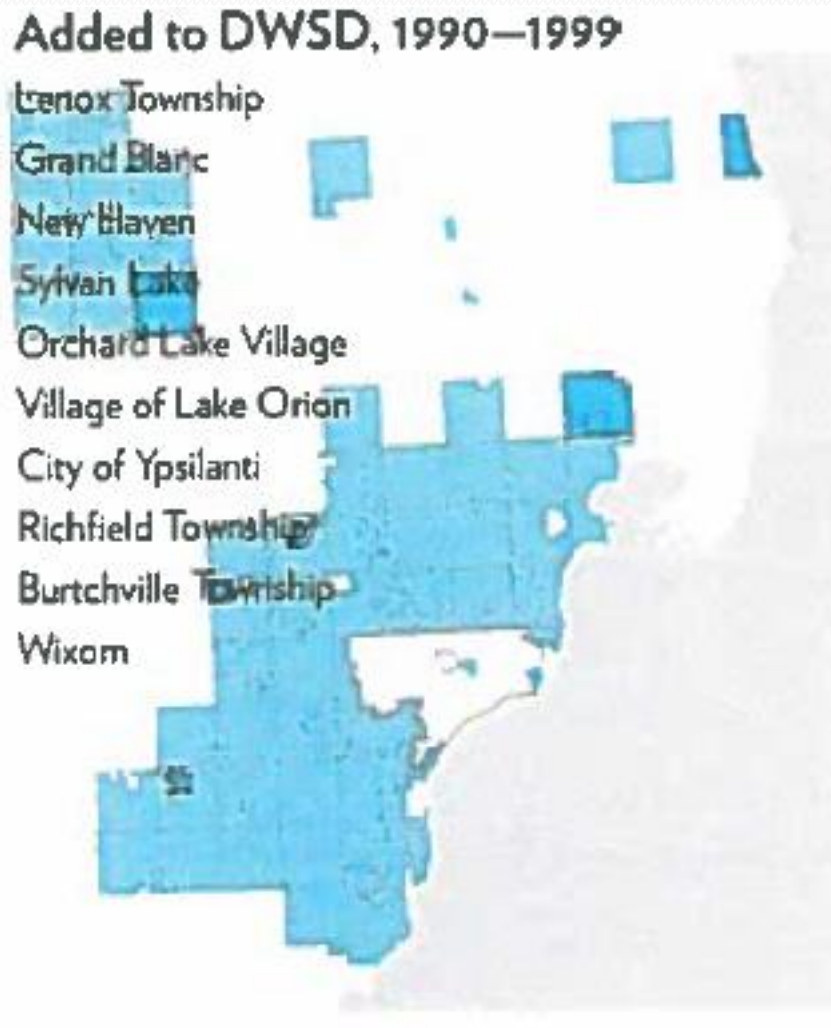


West Bloomfield Twp	Mundy Township
Berlin Township	Pittsfield Township
Estrlin Beach	Vienna Township
City of Bloomfield Hills	City of Burton
Harrison Township	Clayton Township
Flint Township	Chesterfield Township
Flushing Township	Gaines Township
Mt. Morris Township	OGDC
Swartz Creek	Almont
Davison Township	Genesee Township
Inlay City	Greenwood Township
City of Plymouth	Montrose Township
City of Rochester Hills	Washington Township
Ypsilanti Township	City of Montrose
City of Mt. Morris	

Written
at
ONLY

Added to DWSD, 1990–1999

Lenox Township
Grand Blanc
New Haven
Sylvan Lake
Orchard Lake Village
Village of Lake Orion
City of Ypsilanti
Richfield Township
Burtchville Township
Wixom



Written
al
ONLY

Added to DWSD, 2000–2009

Davidson

Elba

Lapeer Township

Oregon Township

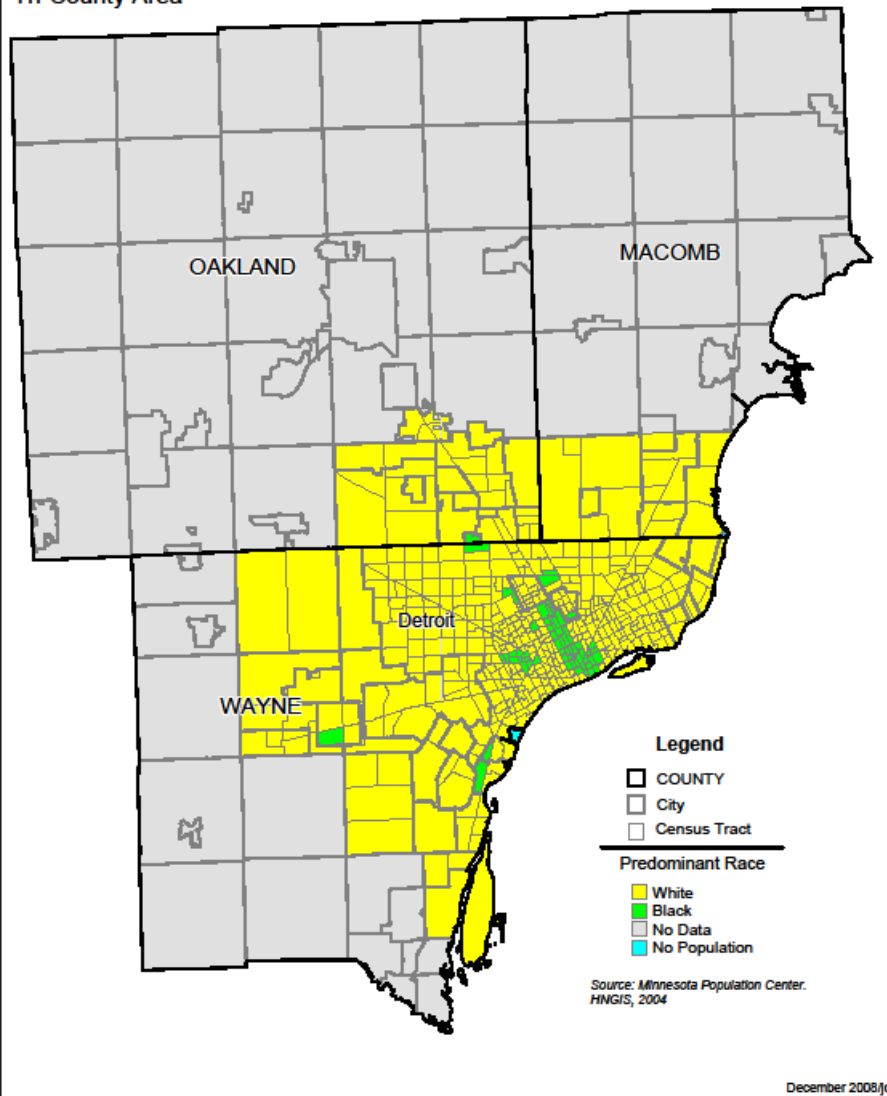
Richfield Township



Written
at
ONLY

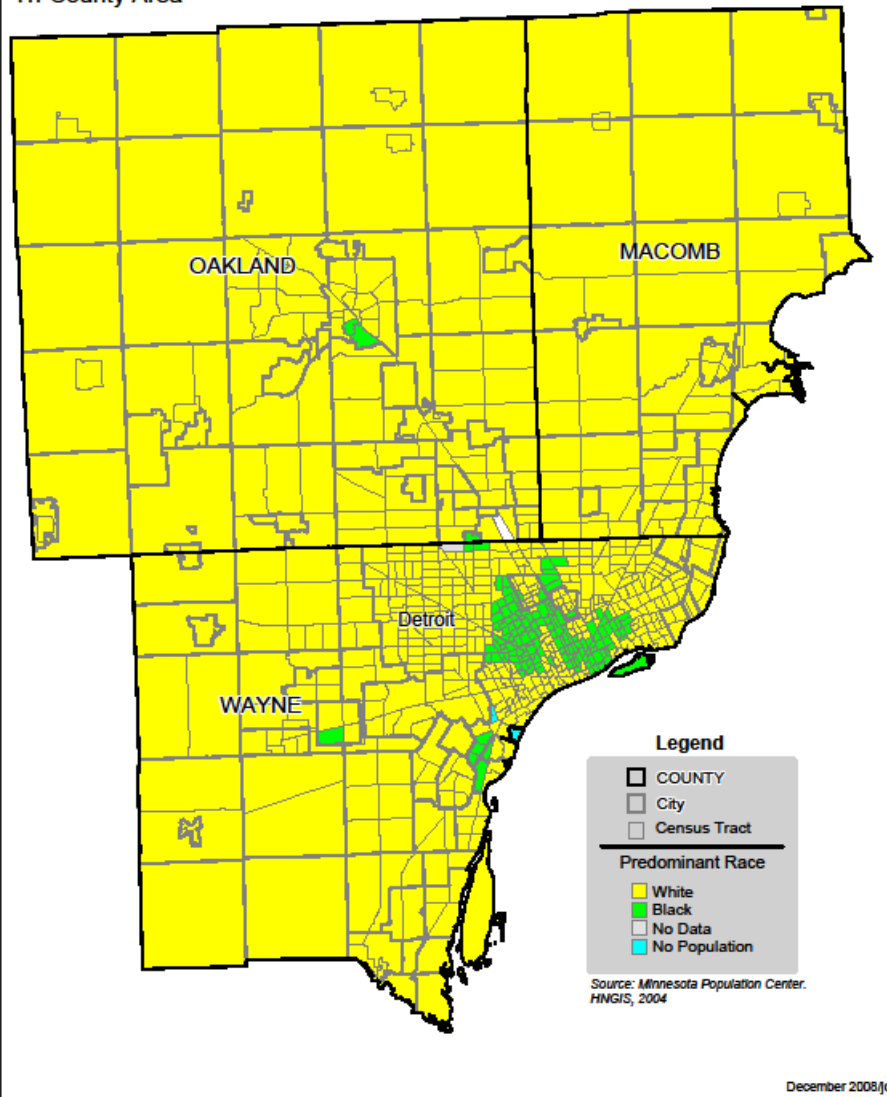
Predominant Race, 1950

Tri-County Area



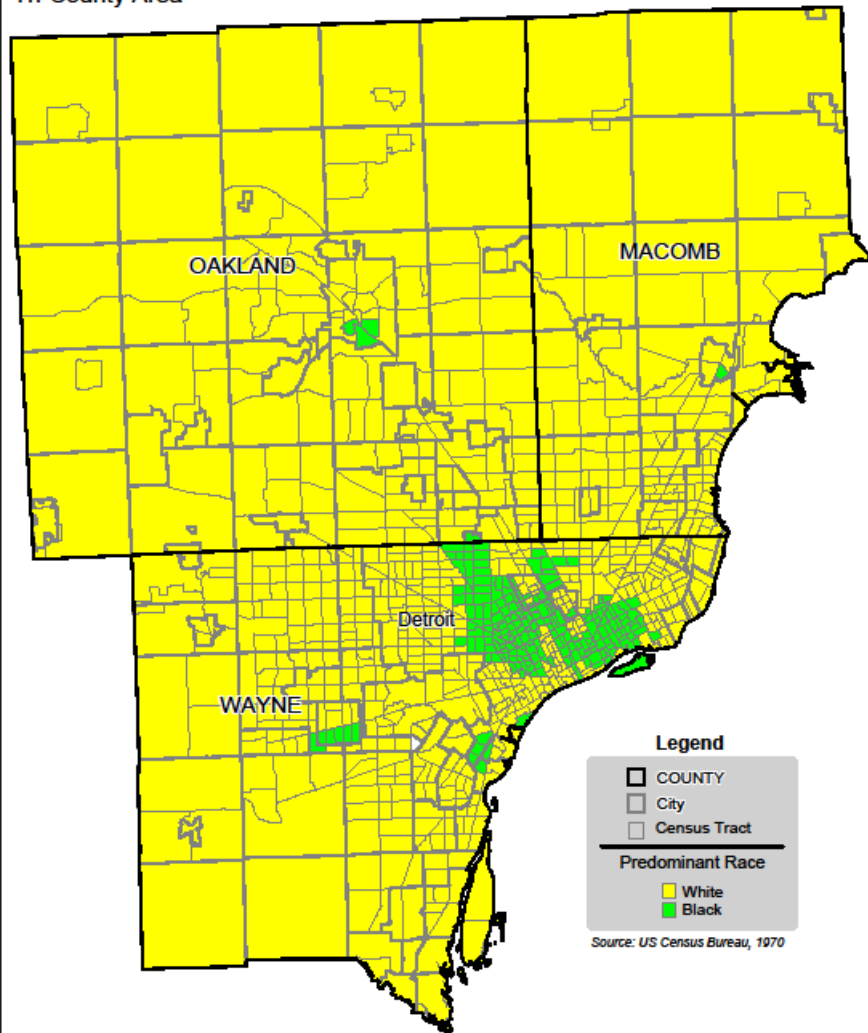
Predominant Race, 1960

Tri-County Area



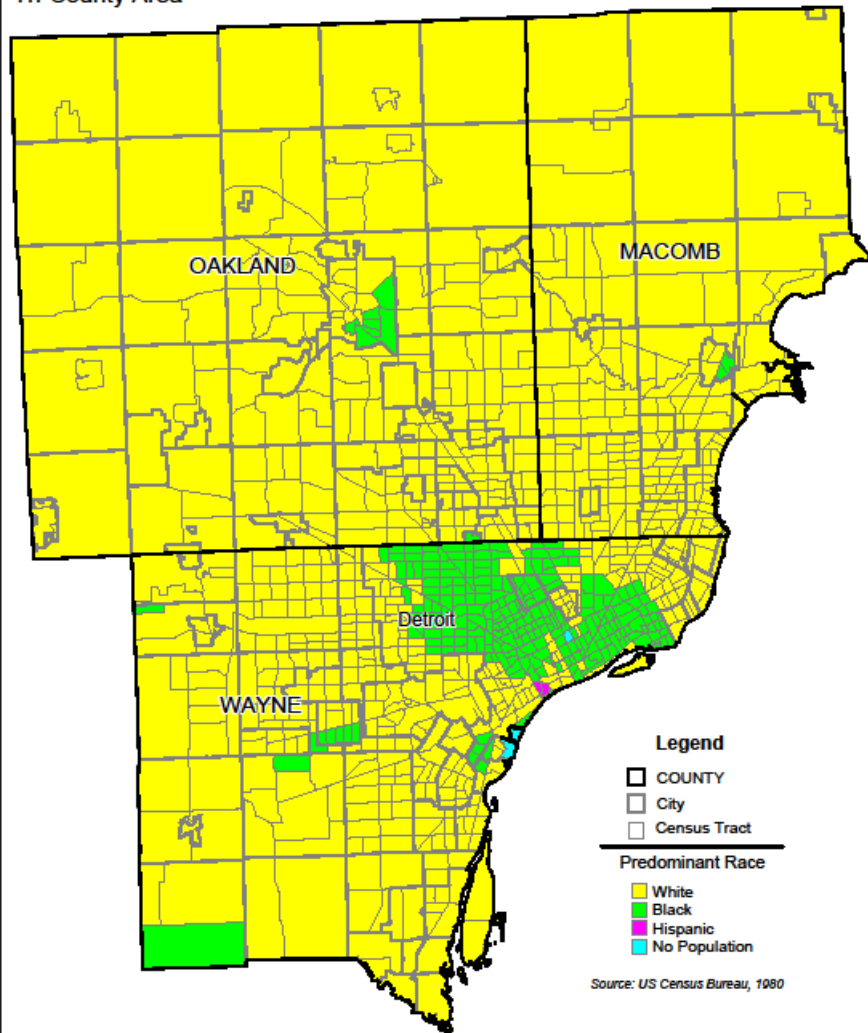
Predominant Race, 1970

Tri-County Area



Predominant Race, 1980

Tri-County Area

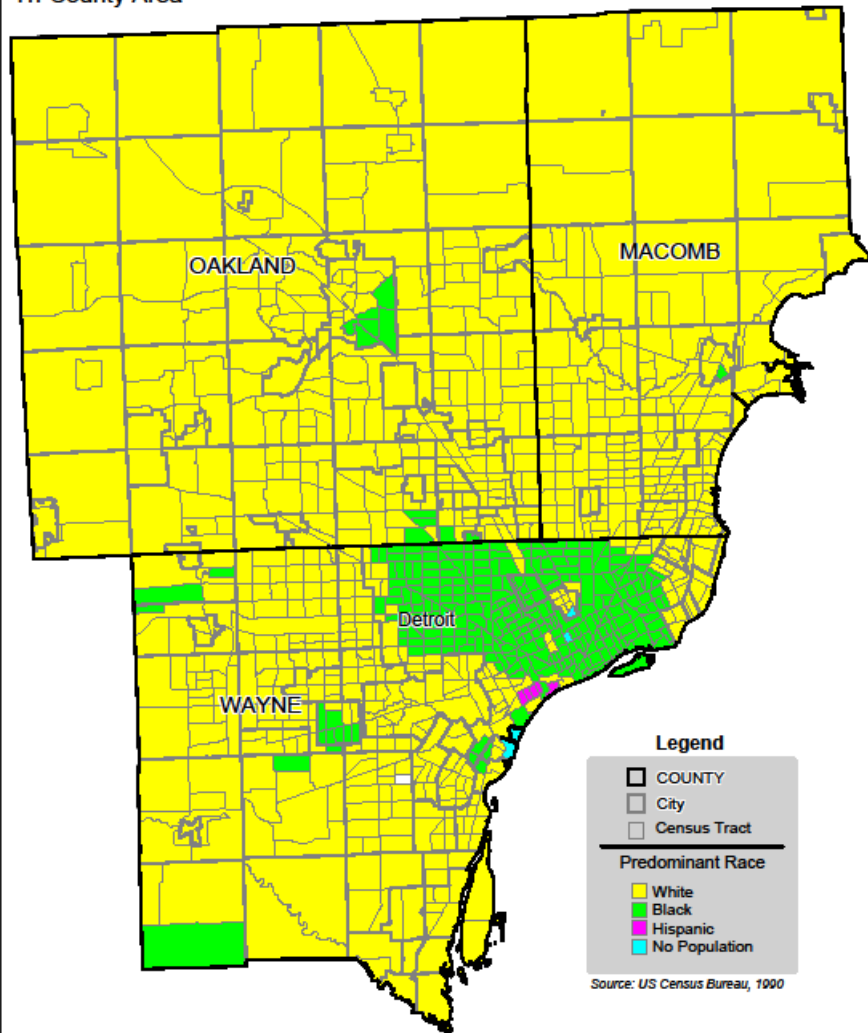


Source: US Census Bureau, 1980

December 2008/jcb

Predominant Race, 1990

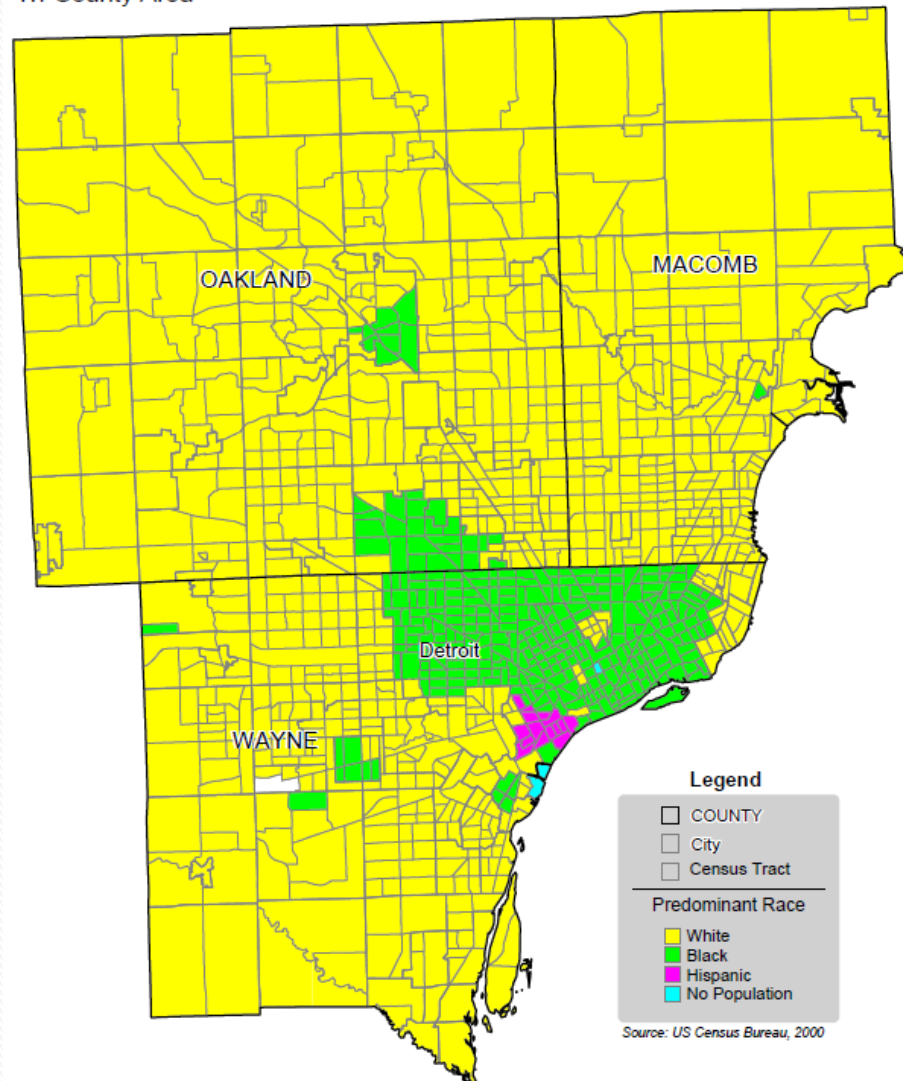
Tri-County Area



December 2008/jcb

Predominant Race, 2000

Tri-County Area

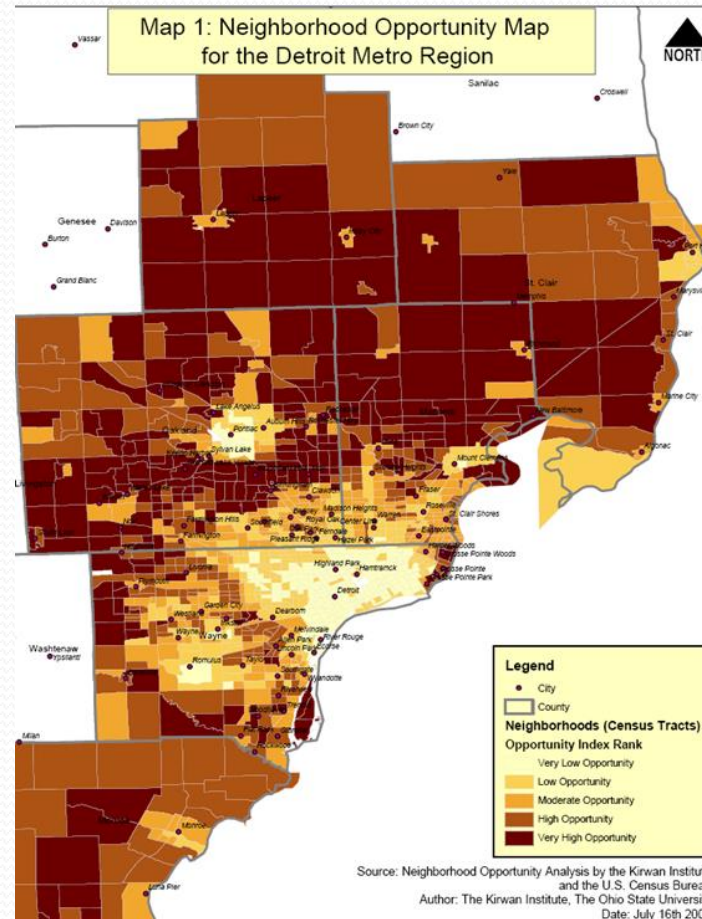


Where is opportunity?

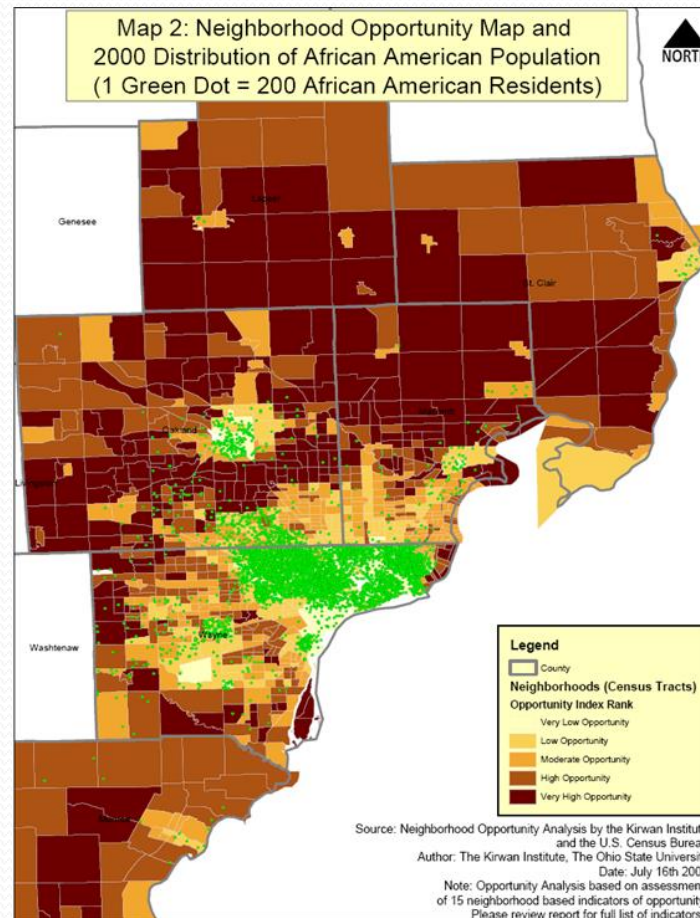
- Mapping Opportunity
- Michigan Roundtable-Kirwan Institute Opportunity Mapping (2008)
- Defining Opportunity
 - Housing
 - Employment
 - Schooling
 - Health
 - Transportation
 - Food security
 - Living environment

Copyrighted
Material
VIEW ONLY

Segregation wealth & opportunity



Spatial Racism in S.E. Michigan



Race, rates and infrastructure

- Municipal distress in cities like Detroit and Flint are grounded in a history of spatial-structural racism
- Spatial-structural racism lies at the heart of water quality issues and water un-affordability in Flint, Detroit and Toledo
- Strategic racism and Emergency Management lie at the heart of the Flint Water Crises, water shutoffs, the theft of DWSD and the creation of the GLWA
- Only the intentional use of a racial equity frame can lead to sustainable change

Action in equity

- **Equity:** justice according to natural law
- **Restitution:** an equitable remedy with two elements
 - A benefit has been conferred
 - It would be unjust to retain it
- **Reparations:**
 - **1a:** a repairing or keeping in repair
 - **2a:** the act of making amends, offering expiation, or giving satisfaction for a wrong or injury
- **Race, Rates & Infrastructure**

